

Life at SAQ

Basic Outline – Mon to Friday

- 6am - Morning exercise (Mon, Wednesday, Friday)
- 6.30 - Quiet Time and prep. for the day ahead
- 7.30 - Breakfast

Tuesday class service



Thursday
Prayer
Partners

Morning Ministries

8am til
12noon



St Anthony – Children's Village



Eagles Wings School and Misaka



Hut to Hut Evangelism



Road Block ministry



Basic Outline – Mon to Friday

- 12.30 - Lunch
- 2pm - 2 hour Lecture (or Wednesday sports)
- 4pm - Free time
- 6pm - AQ meal (with KBC students on Mondays)
- 7.30 - Team-time worship (twice a week)
- 10pm - Bed time



Topics may include:

Basic Beliefs / Doctrines

African Culture

Praise and Worship

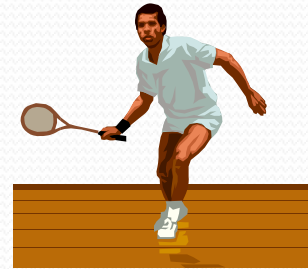
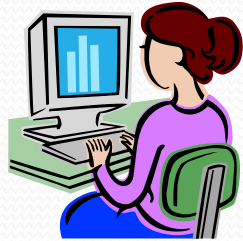
Gifts and Fruit of the Spirit

Plus John Miles' week course.

*Essays and PI's also play a vital part in each student's growth.

Saturdays

Free Time





Sundays



Team members worship in one of the local Apostolic churches..

Team worship on a Sunday night is always uplifting.. A good chance to reflect and share..



Expeditions

1. Chingola (March)
2. Malawi (May)
3. Lusaka / Livingstone (June)



Expedition 1 (Chingola, Zambia)

These expeditions follow the same ethos and purpose of the entire 6 month discipleship program.. To grow in faith while providing practical and spiritual help for others.





Malawi (3 - 4 weeks)

During our expedition to Malawi the team will be based at Pastor Rogers' house in Nsanje. The team will lead church services, share testimonies, words of encouragement and take their turn at preaching. A hugely rewarding challenge. There will also be plenty of chance to "entertain" children in their masses as they come to see the Muzungus!

There may also be an opportunity to climb up to a mountain village and cross over into Mozambique by foot.









26/10/2005 11:30 am